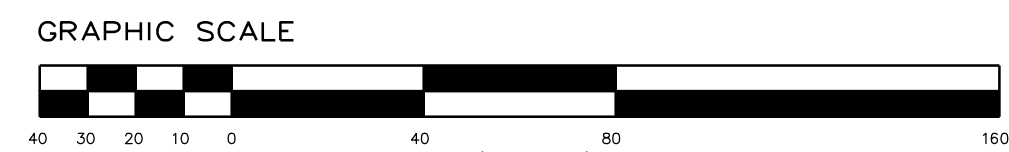


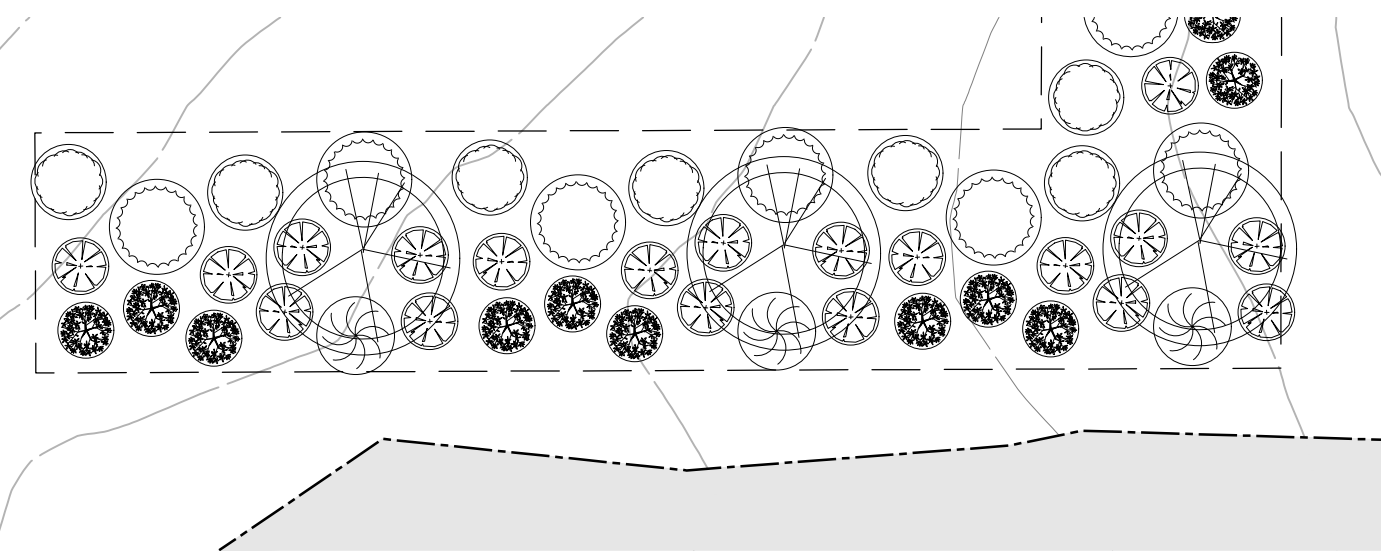
PLANTING PLAN LEGEND



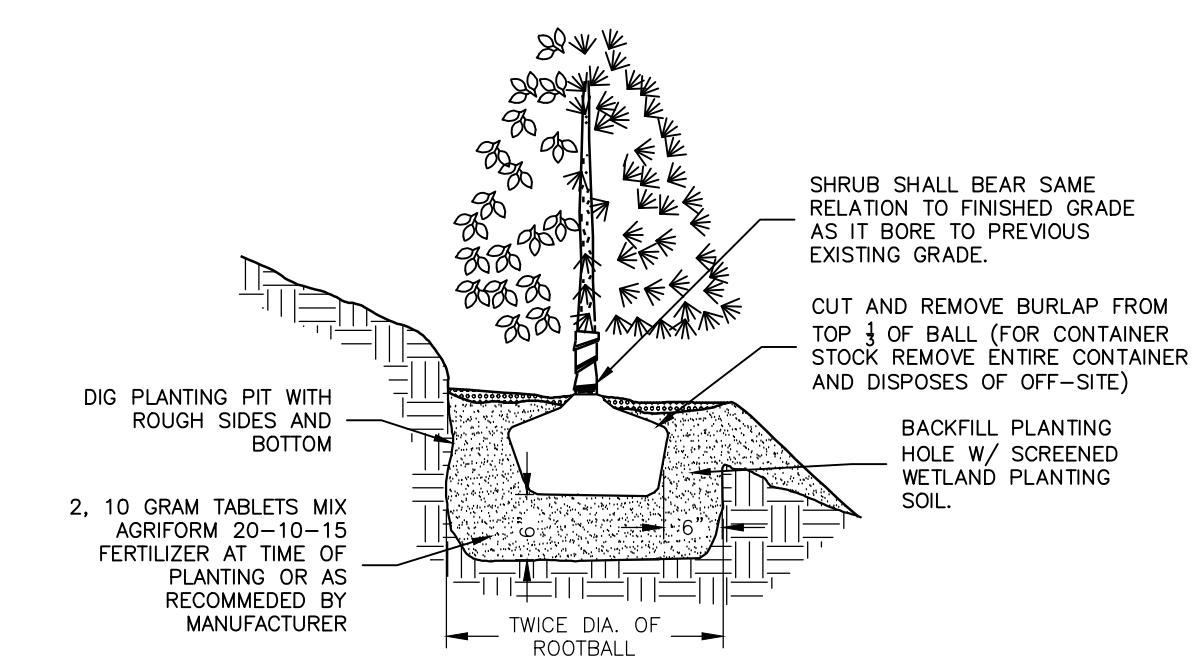
- EXISTING GRADE
- GRAVEL ACCESS ROAD
- USACE WETLAND AREAS
- FIXED KNOT FARM FENCE
- SOLAR PANEL TRACKER (SEE ELECTRICAL PLANS FOR DETAILS)
- MEDIUM VOLTAGE TRENCH
- UNDERGROUND ELECTRIC TRENCH
- PROPOSED CONTOUR

KEY	COMMON	BOTANICAL	SIZE	NO.	SPACING
	PROPOSED: WINTERBERRY ALTERNATE: BAYBERRY	PROPOSED: ILEX VERTICILLATA ALTERNATE: MYRICA PENNSYLVANICA	PROPOSED/ALTERNATE: 3 GA.	419	6' O.C. & STAGGERED
	PROPOSED: SCARLET OAK ALTERNATE: BLACK BIRCH	PROPOSED: QUERCUS COCCINEA ALTERNATE: BETULA LENTA	PROPOSED: 12-14" HT ALTERNATE: 6-7" HT	73	45' O.C.
	PROPOSED: HIGHBUSH BLUEBERRY ALTERNATE: RED OSER DOGWOOD	PROPOSED: VACCINIUM CORYMBOSUM ALTERNATE: CORNUS SERICEA	PROPOSED/ALTERNATE: 5-7 GALLON	235	6' O.C. & STAGGERED
	PROPOSED: EASTERN RED CEDAR*** ALTERNATE: WINTERBERRY VIBURNUM	PROPOSED: JUNIPERUS VIRGINIANA ALTERNATE: VIBURNUM LENTAGO	PROPOSED: 6-8" HT ALTERNATE: 3-4" HT	158	18' O.C.**
	PROPOSED: PITCH PINE ALTERNATE: CRANBERRY BUSH	PROPOSED: PINUS RIGIDA ALTERNATE: VIBURNUM TRILOBUM	PROPOSED: 8-10" HT ALTERNATE: 2- 3"	150	20' O.C. & STAGGERED
	PROPOSED: SCRUB OAK ALTERNATE: STAGHORN SUMAC	PROPOSED: QUERCUS ILICIFOLIA ALTERNATE: RHUS TYPHINA	PROPOSED: 3-4" HT ALTERNATE: 4-5" HT	73	45' O.C.

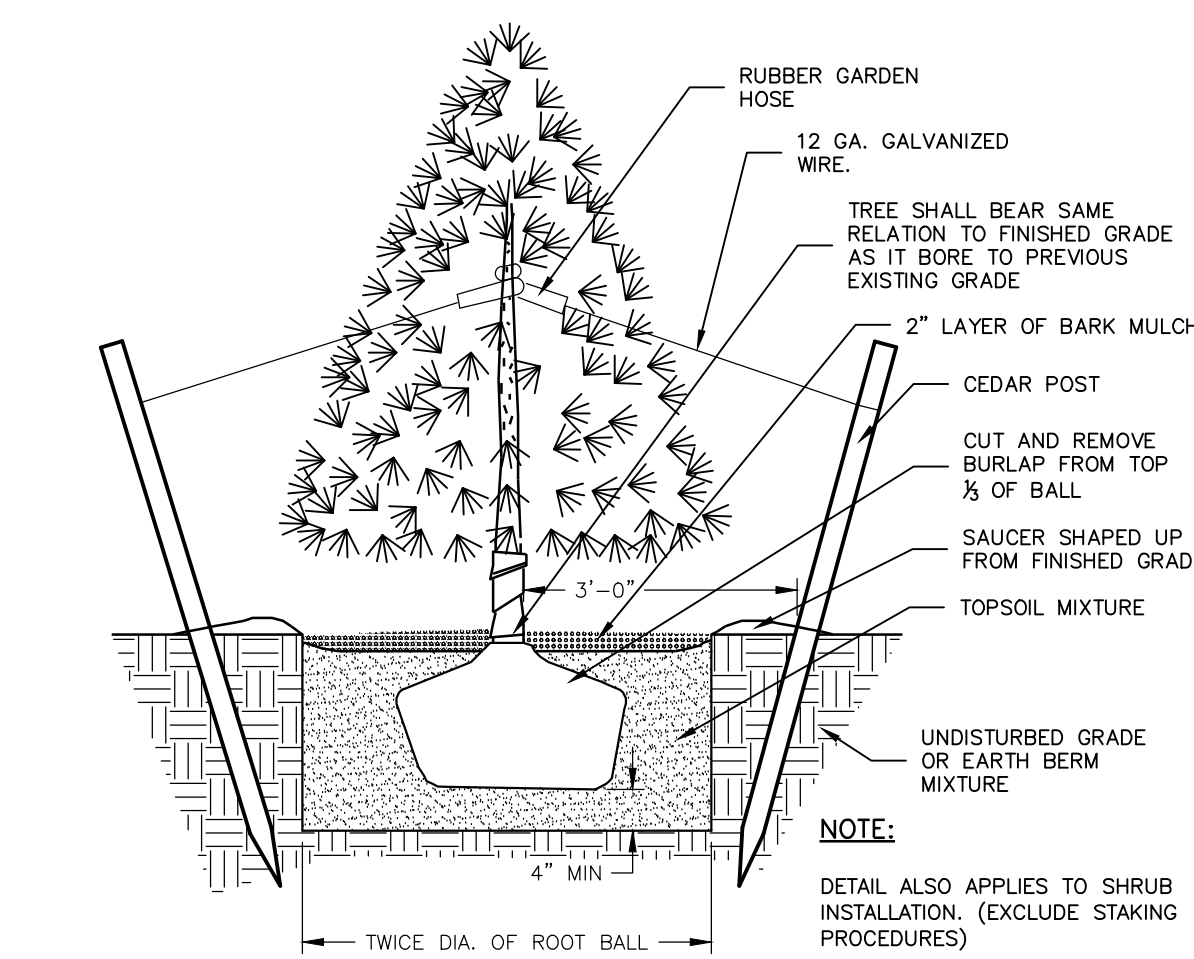
*NO. DENOTES TOTAL NUMBER OF PROPOSED PLANTINGS FOR ENTIRE SITE PLAN
 **UNLESS OTHERWISE NOTED
 ***IN AREAS WHERE ONLY RED CEDARS ARE PROPOSED, NO ALTERNATES WILL BE PERMITTED WITHOUT PRIOR APPROVAL FROM DEVELOPER.



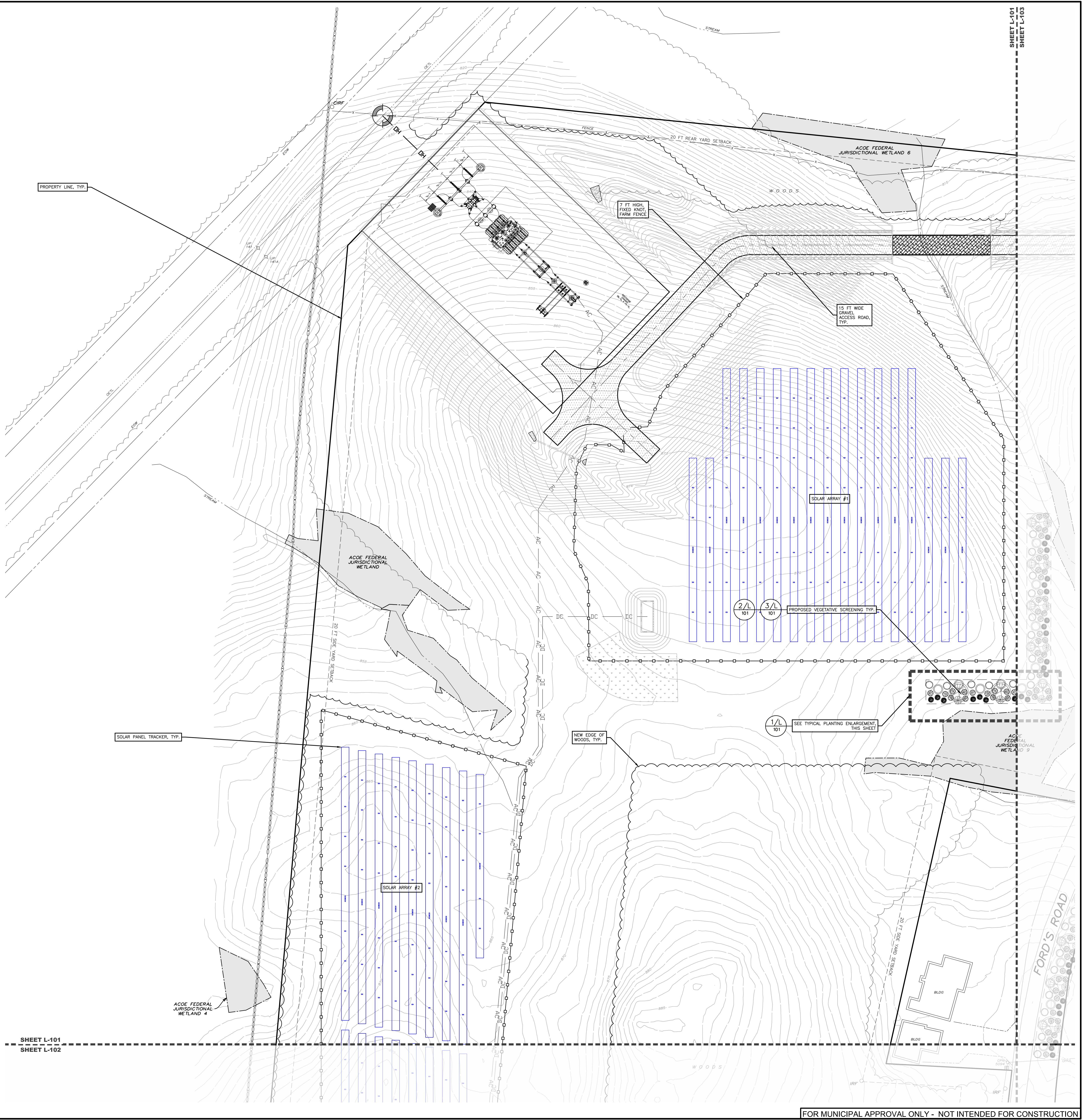
1/L TYPICAL PLANTING ENLARGEMENT
1/20'



2/L PLANTING ON A SLOPE
NOT TO SCALE



3/L CONIFEROUS PLANTING
NOT TO SCALE



SHEET L-101
SHEET L-102

PROPOSED SITE PLAN FOR
HAWTHORN SOLAR FARM
 HAWTHORN SOLAR, LLC
 FORDS ROAD & PINE VALLEY ROAD
 TOWN OF HOOSICK
 RENSSELAER COUNTY, NEW YORK

DESIGN BY	DATE	BY
CHECKED BY	DATE	BY
PER PROJECT NUMBER	13661	

REVISION	DATE	BY
1	5/11/23	AM
2	12/23/23	AM

SCALE: 1" = 40'

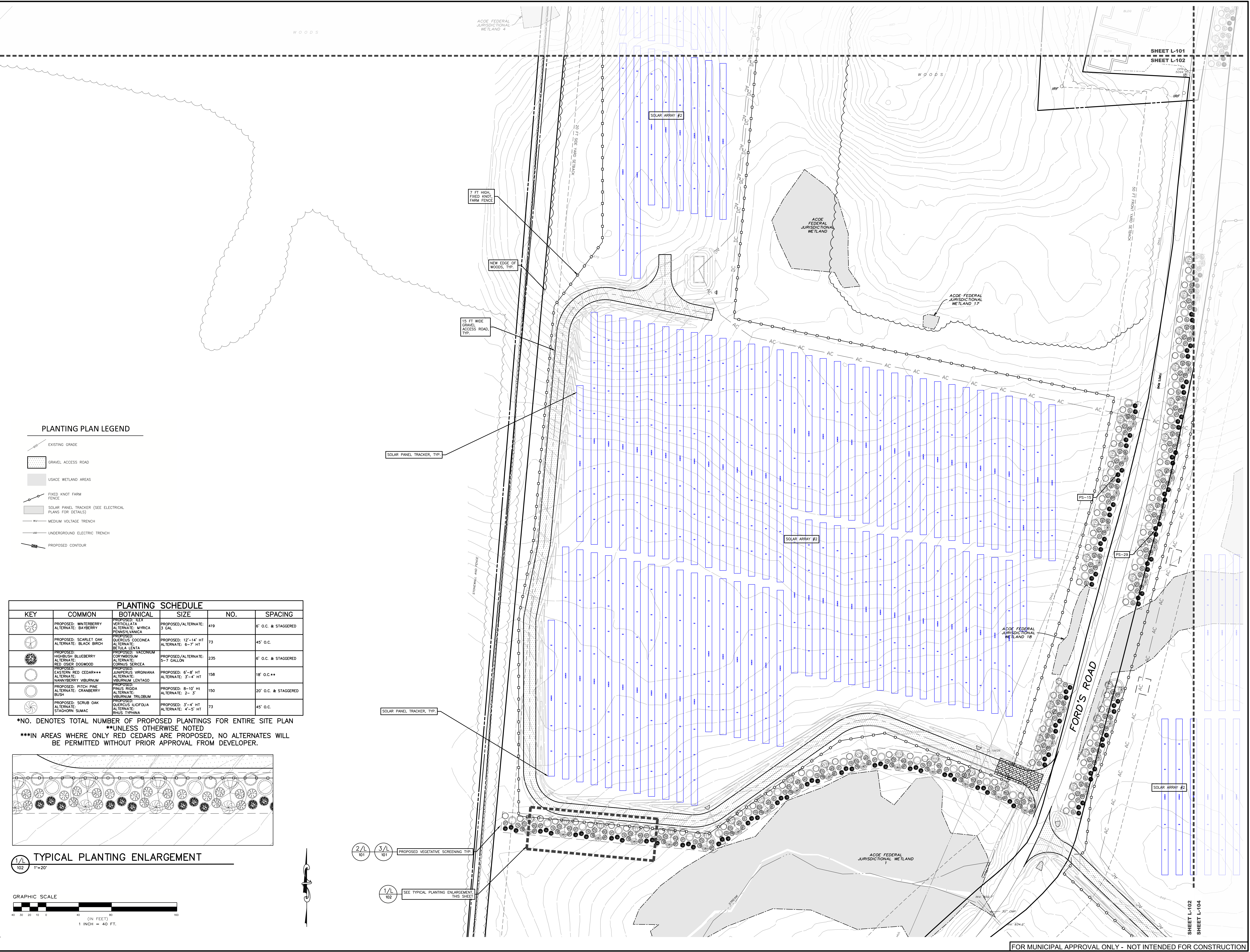
NOT FOR CONSTRUCTION

SHEET TITLE:
PLANTING PLAN

SHEET:
L-101

DRAWN BY:	JDM
CHECKED BY:	SPK
DATE:	11/21/23
PROJECT NUMBER:	13661
REVISION:	DATE:
1	11/21/23
2	12/21/23

SCALE:	1" = 40'
NOT FOR CONSTRUCTION	
SHEET TITLE:	PLANTING PLAN
SHEET:	L-102

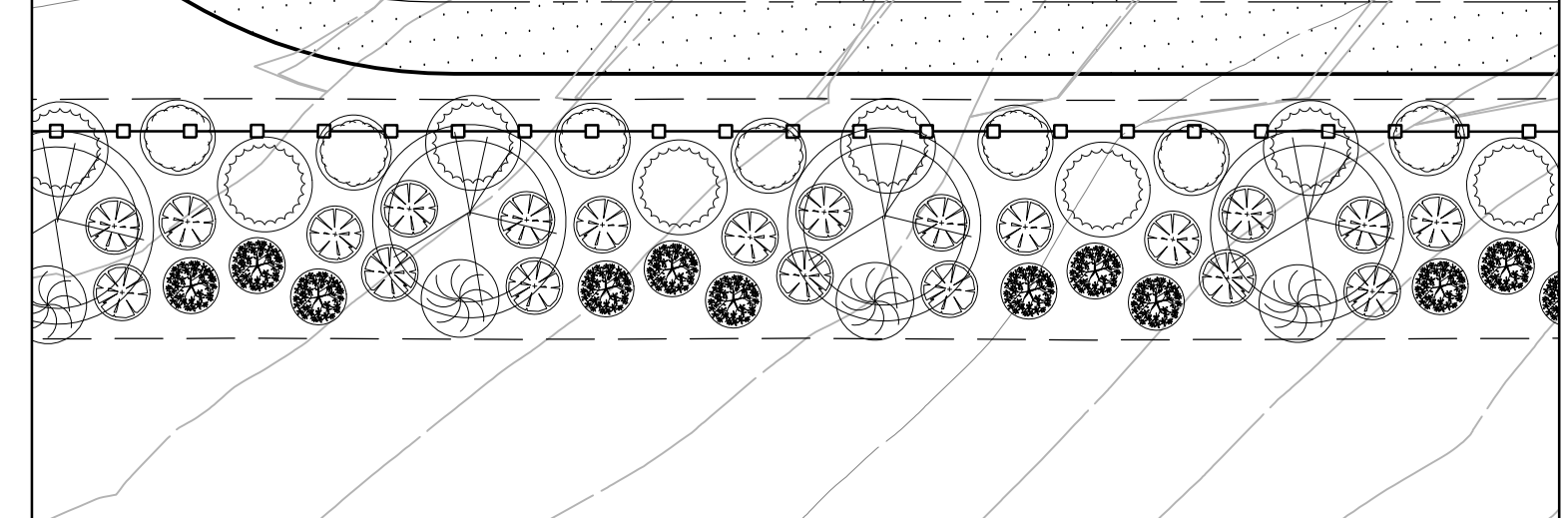


PLANTING PLAN LEGEND

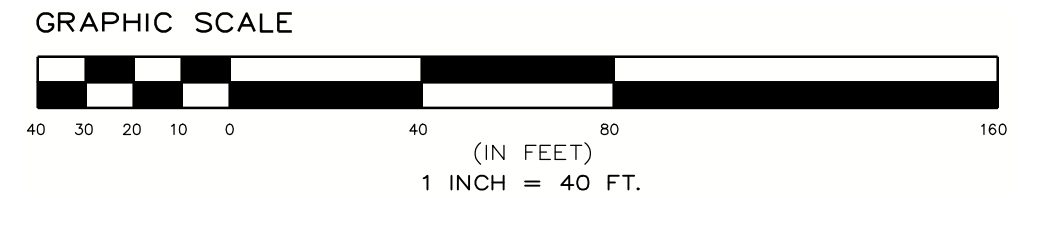
- EXISTING GRADE
- GRAVEL ACCESS ROAD
- USACE WETLAND AREAS
- FIXED KNOT FARM FENCE
- SOLAR PANEL TRACKER (SEE ELECTRICAL PLANS FOR DETAILS)
- MEDIUM VOLTAGE TRENCH
- UNDERGROUND ELECTRIC TRENCH
- PROPOSED CONTOUR

PLANTING SCHEDULE					
KEY	COMMON	BOTANICAL	SIZE	NO.	SPACING
	PROPOSED: WINTERBERRY ALTERNATE: BAYBERRY	PROPOSED: ILEX VERTICILLATA ALTERNATE: MYRICA PENNSYLVANICA	PROPOSED/ALTERNATE: 3 GAL	419	6' O.C. & STAGGERED
	PROPOSED: SCARLET OAK ALTERNATE: BLACK BIRCH	PROPOSED: QUERCUS COCONEA ALTERNATE: BETULA LENTIA	PROPOSED: 12'-14" HT ALTERNATE: 6-7" HT	73	45' O.C.
	PROPOSED: HIGHBUSH BLUEBERRY ALTERNATE: RED OSER DOGWOOD	PROPOSED: CORYMBOSUM ALTERNATE: CORNUS SERICEA	PROPOSED/ALTERNATE: 5-7 GALLON	235	6' O.C. & STAGGERED
	PROPOSED: EASTERN RED CEDAR*** ALTERNATE: NANNYBERRY VIBURNUM	PROPOSED: JUNPERUS VIRGINIANA ALTERNATE: VIBURNUM LENTAGO	PROPOSED: 6"-8" HT ALTERNATE: 3'-4" HT	158	18' O.C.**
	PROPOSED: PITCH PINE ALTERNATE: CRANBERRY BUSH	PROPOSED: PINUS RIGIDA ALTERNATE: VIBURNUM TRILOBUM	PROPOSED: 8-10" HT ALTERNATE: 2'-3'	150	20' O.C. & STAGGERED
	PROPOSED: SCRUB OAK ALTERNATE: STAGHORN SUMAC	PROPOSED: QUERCUS ILICIFOLIA ALTERNATE: RUSUS SPHINNA	PROPOSED: 3'-4" HT ALTERNATE: 4'-5" HT	73	45' O.C.

*NO. DENOTES TOTAL NUMBER OF PROPOSED PLANTINGS FOR ENTIRE SITE PLAN
 **UNLESS OTHERWISE NOTED
 ***IN AREAS WHERE ONLY RED CEDARS ARE PROPOSED, NO ALTERNATES WILL BE PERMITTED WITHOUT PRIOR APPROVAL FROM DEVELOPER.



TYPICAL PLANTING ENLARGEMENT
 1" = 20"

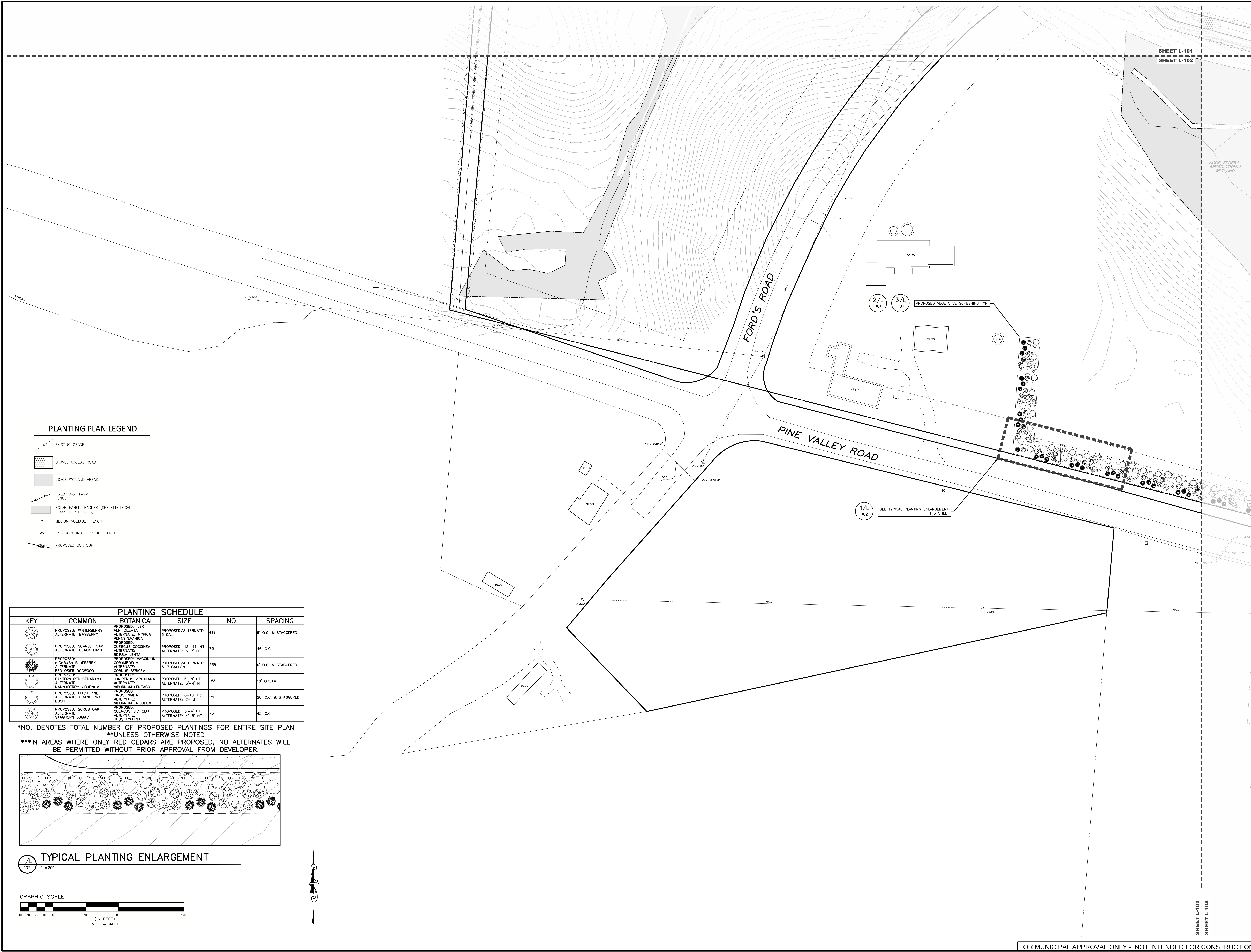


- 2/L 101 PROPOSED VEGETATIVE SCREENING TYP.
- 3/L 101 PROPOSED VEGETATIVE SCREENING TYP.
- 1/L 102 SEE TYPICAL PLANTING ENLARGEMENT THIS SHEET

**PROPOSED SITE PLAN FOR
 HAWTHORN SOLAR FARM**
 HAWTHORN SOLAR, LLC
 FORDS ROAD & PINE VALLEY ROAD
 TOWN OF HOOSICK
 RENSSELAER COUNTY, NEW YORK

DRAWN BY:	JDM
CHECKED BY:	SP
PROJECT NUMBER:	1361
DATE:	5/11/23
REVISION:	
DATE:	
BY:	
REVISION:	
DATE:	
BY:	

SCALE:	1" = 40'
NOT FOR CONSTRUCTION	
SHEET TITLE:	PLANTING PLAN
SHEET:	L-102

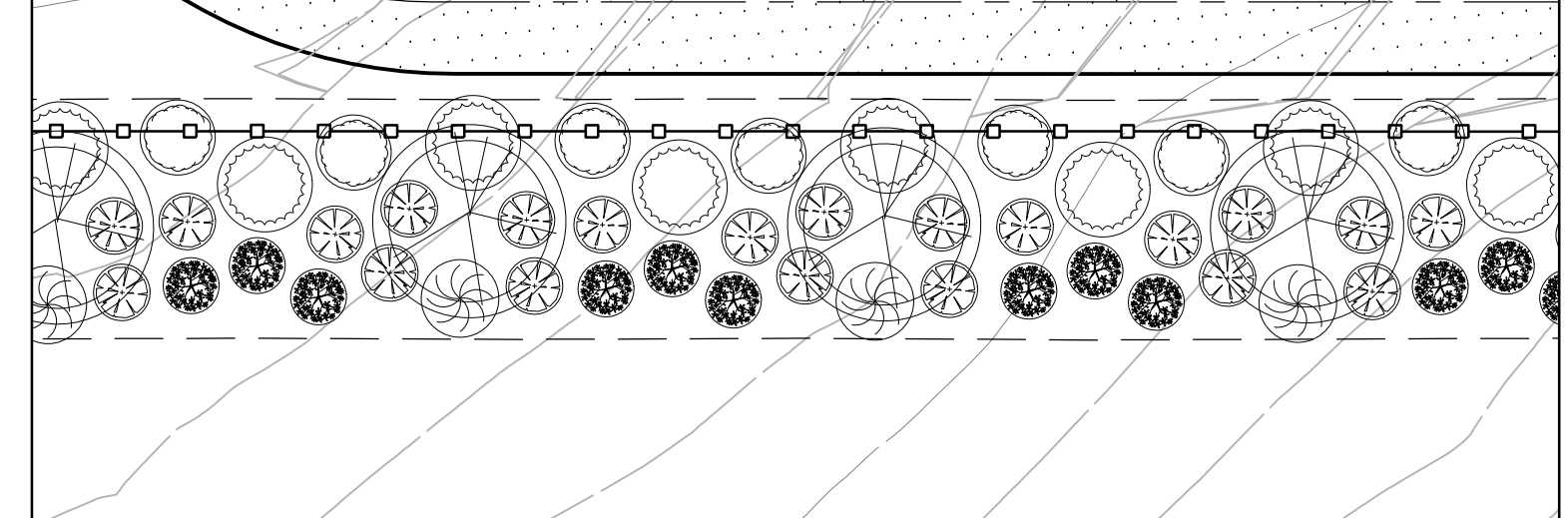


PLANTING PLAN LEGEND

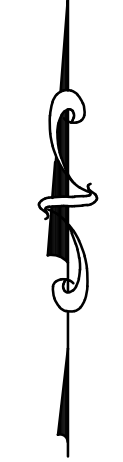
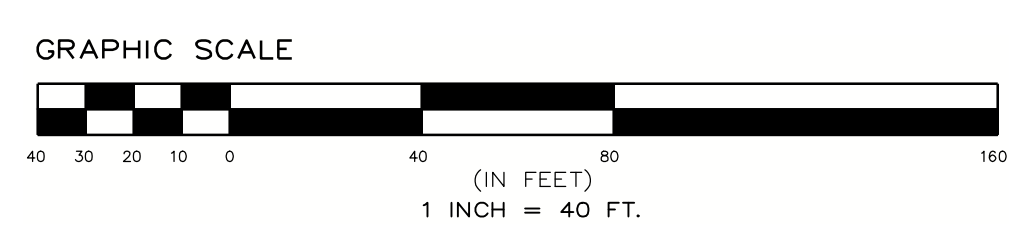
- - - EXISTING GRADE
- ▨ GRAVEL ACCESS ROAD
- ▨ USACE WETLAND AREAS
- - - FIXED KNOT FARM FENCE
- ▨ SOLAR PANEL TRACKER (SEE ELECTRICAL PLANS FOR DETAILS)
- - - MEDIUM VOLTAGE TRENCH
- - - UNDERGROUND ELECTRIC TRENCH
- - - PROPOSED CONTOUR

KEY	COMMON	BOTANICAL	SIZE	NO.	SPACING
	PROPOSED: WINTERBERRY ALTERNATE: BAYBERRY	PROPOSED: ILEX VERTICILLATA ALTERNATE: MYRICA PENNSYLVANICA	PROPOSED/ALTERNATE: 3 GAL	419	6' O.C. & STAGGERED
	PROPOSED: SCARLET OAK ALTERNATE: BLACK BIRCH	PROPOSED: QUERCUS COCCINEA ALTERNATE: BETULA LENTA	PROPOSED: 12'-14' HT ALTERNATE: 6-7' HT	73	45' O.C.
	PROPOSED: Highbush Blueberry ALTERNATE: RED OSER DOGWOOD	PROPOSED: VACCINIUM CORNIBOSUM ALTERNATE: CORNUS SERICEA	PROPOSED/ALTERNATE: 5-7 GALLON	235	6' O.C. & STAGGERED
	PROPOSED: EASTERN RED CEDAR*** ALTERNATE: NANNYBERRY VIBURNUM	PROPOSED: JUNIPERUS VIRGINIANA ALTERNATE: VIBURNUM LENTAGO	PROPOSED: 6'-8' HT ALTERNATE: 3'-4' HT	158	18' O.C.**
	PROPOSED: PITCH PINE ALTERNATE: CRANBERRY BUSH	PROPOSED: PINUS RIGIDA ALTERNATE: VIBURNUM TRILOBUM	PROPOSED: 8-10' HT ALTERNATE: 2-3'	150	20' O.C. & STAGGERED
	PROPOSED: SCRUB OAK ALTERNATE: STAGHORN SUMAC	PROPOSED: QUERCUS BICIFOLIA ALTERNATE: Rhus TYPHINA	PROPOSED: 3'-4' HT ALTERNATE: 4'-5' HT	73	45' O.C.

*NO. DENOTES TOTAL NUMBER OF PROPOSED PLANTINGS FOR ENTIRE SITE PLAN
 **UNLESS OTHERWISE NOTED
 ***IN AREAS WHERE ONLY RED CEDARS ARE PROPOSED, NO ALTERNATES WILL BE PERMITTED WITHOUT PRIOR APPROVAL FROM DEVELOPER.



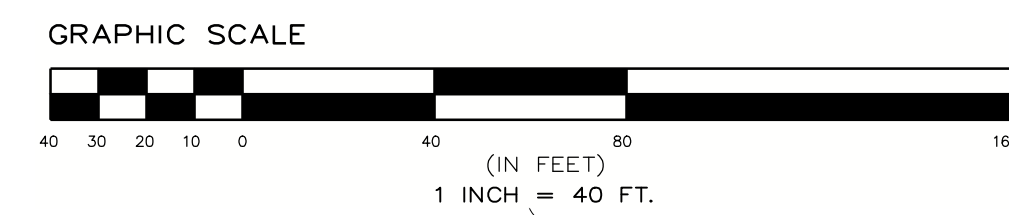
TYPICAL PLANTING ENLARGEMENT
 1/4" = 1" = 20'



SHEET L-102
 SHEET L-104

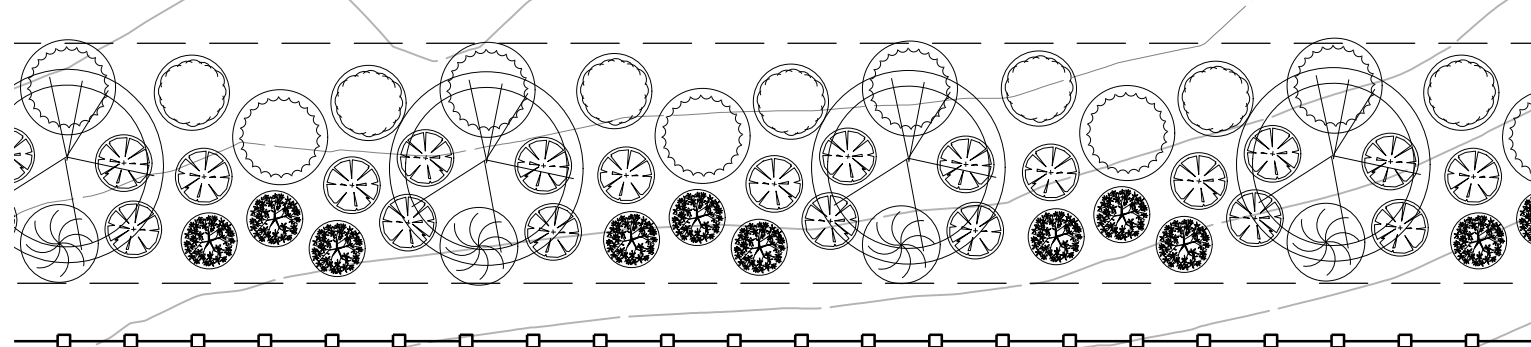
KEY	COMMON	BOTANICAL	SIZE	NO.	SPACING
	PROPOSED: WINTERBERRY ALTERNATE: BAYBERRY	PROPOSED: ILEX VERTICILLATA ALTERNATE: MYRTICA PENNSYLVANICA	PROPOSED/ALTERNATE: 3 GAL	419	6' O.C. & STAGGERED
	PROPOSED: SCARLET OAK ALTERNATE: BLACK BIRCH	PROPOSED: QUERCUS COCCINEA ALTERNATE: BETULA LENTA	PROPOSED: 12"-14" HT ALTERNATE: 6-7" HT	73	45' O.C.
	PROPOSED: HIGHBUSH BLUEBERRY ALTERNATE: RED OSER DOGWOOD	PROPOSED: VACCINIUM COCCINEUM ALTERNATE: CORNUS SERICEA	PROPOSED/ALTERNATE: 5-7 GALLON	235	6' O.C. & STAGGERED
	PROPOSED: EASTERN RED CEDAR*** ALTERNATE: MANIBERRY YBURNUM	PROPOSED: JUNIPERUS VIRGINIANA ALTERNATE: YBURNUM LENTAGO	PROPOSED: 6"-8" HT ALTERNATE: 3"-4" HT	158	18' O.C.**
	PROPOSED: PITCH PINE ALTERNATE: CRANBERRY BUSH	PROPOSED: PINUS RIGIDA ALTERNATE: VIBURNUM TRILOBUM	PROPOSED: 8"-10" HT ALTERNATE: 2-3'	150	20' O.C. & STAGGERED
	PROPOSED: SCRUB OAK ALTERNATE: STAGHORN SUMAC	PROPOSED: QUERCUS ILICIFOLIA ALTERNATE: RHUS TYPHINA	PROPOSED: 3"-4" HT ALTERNATE: 4"-5" HT	73	45' O.C.

*NO. DENOTES TOTAL NUMBER OF PROPOSED PLANTINGS FOR ENTIRE SITE PLAN
 **UNLESS OTHERWISE NOTED
 ***IN AREAS WHERE ONLY RED CEDARS ARE PROPOSED, NO ALTERNATES WILL BE PERMITTED WITHOUT PRIOR APPROVAL FROM DEVELOPER.

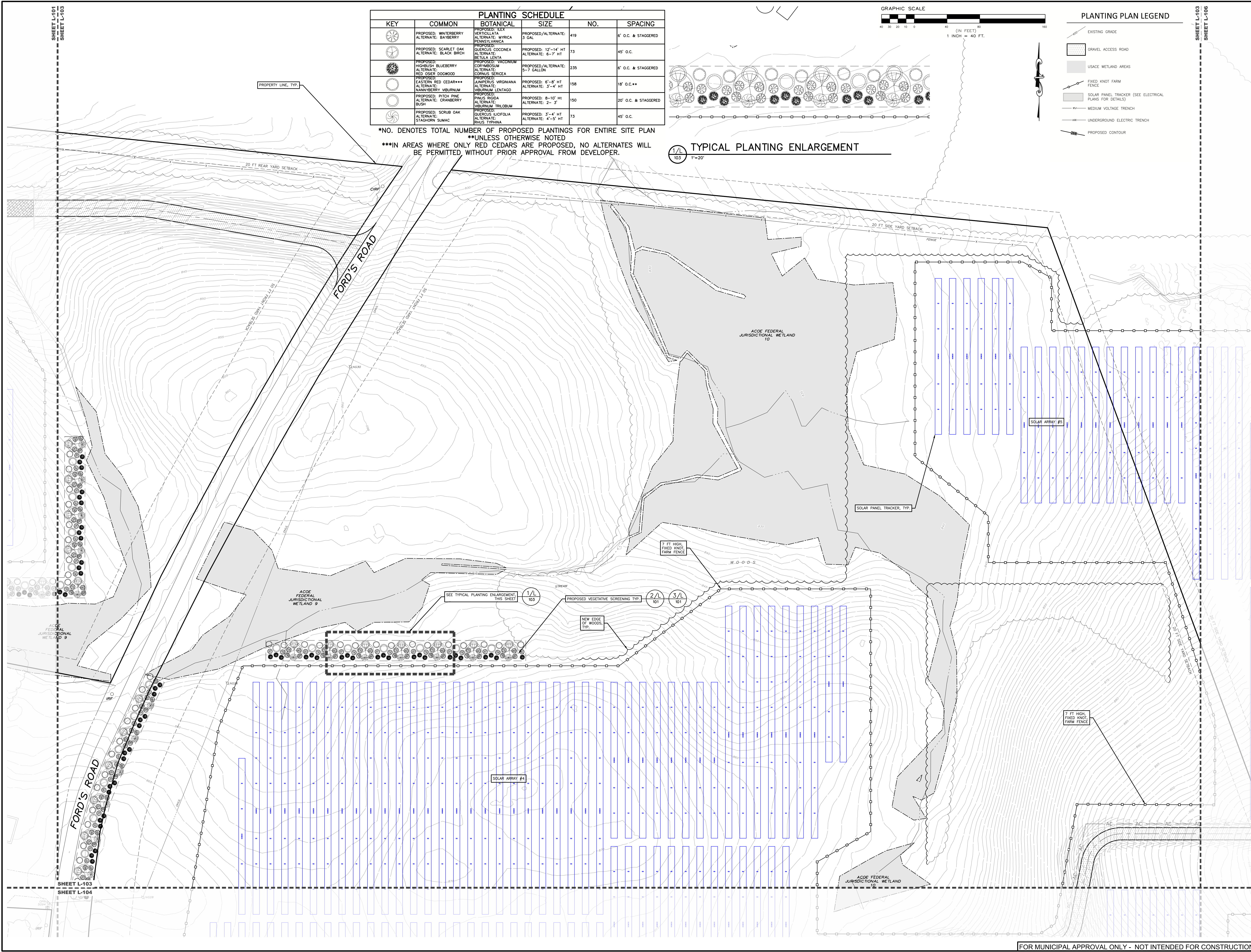


PLANTING PLAN LEGEND

- EXISTING GRADE
- GRAVEL ACCESS ROAD
- USACE WETLAND AREAS
- FIXED KNOT FARM FENCE
- SOLAR PANEL TRACKER (SEE ELECTRICAL PLANS FOR DETAILS)
- MEDIUM VOLTAGE TRENCH
- UNDERGROUND ELECTRIC TRENCH
- PROPOSED CONTOUR



1/L TYPICAL PLANTING ENLARGEMENT
1" = 20'



ENVIRONMENTAL DESIGN PARTNERSHIP, LLP
900 Route 446 Clifton Park, New York, 12065
(518) 537-0021

TAX MAP No. 36-1-11.1, 36-1-9.2, 36-4-10.1
MAY 11, 2023

**PROPOSED SITE PLAN FOR
HAWTHORN SOLAR FARM**
HAWTHORN SOLAR, LLC
FORDS ROAD & PINE VALLEY ROAD
TOWN OF HOOSICK
RENSELAER COUNTY, NEW YORK

REVISION	DATE	BY
ISSUED FOR PERMIT	12/22/23	SM
FOR COMMENTS	12/22/23	SM

SCALE: 1" = 40'

NOT FOR CONSTRUCTION

SHEET TITLE: PLANTING PLAN

SHEET: L-103

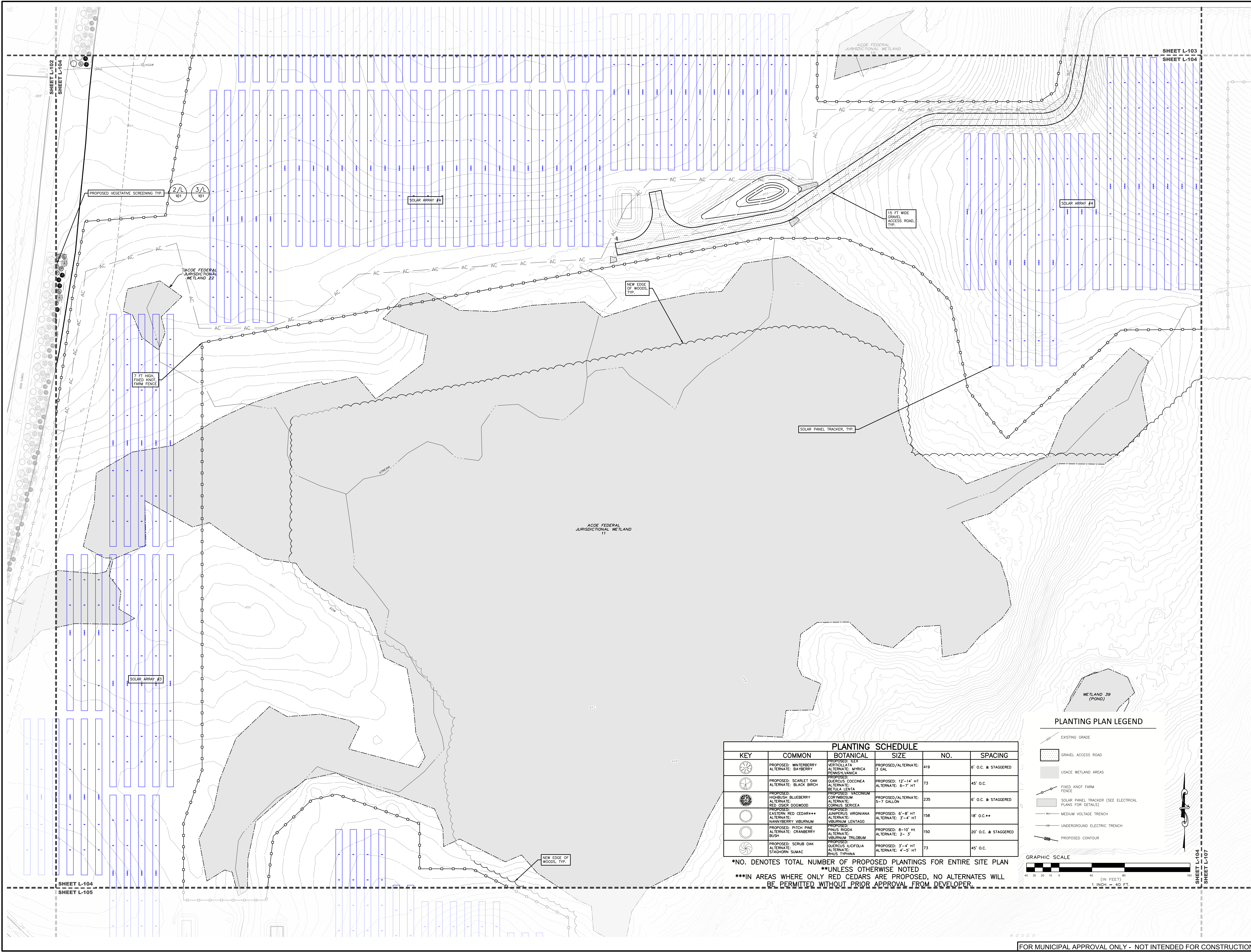
FOR MUNICIPAL APPROVAL ONLY - NOT INTENDED FOR CONSTRUCTION

**PROPOSED SITE PLAN FOR
 HAWTHORN SOLAR FARM**
 HAWTHORN SOLAR, LLC
 FORDS ROAD & PINE VALLEY ROAD
 TOWN OF HOOSICK
 RENSSELAER COUNTY, NEW YORK

DESIGN BY	JDM
CHECKED BY	SKA
DATE	12/23/23
PROJECT NUMBER	1361

REVISION	DATE	BY
ISSUED FOR PERMITS	12/23/23	SKA
FOR COMMENTS		

SCALE:	1" = 40'
SHEET TITLE:	NOT FOR CONSTRUCTION
SHEET:	PLANTING PLAN
SHEET:	L-104



KEY	COMMON	BOTANICAL	SIZE	NO.	SPACING
	PROPOSED: WINTERBERRY ALTERNATE: BAYBERRY	PROPOSED: ILEX VERTICILLATA ALTERNATE: MYRICA PENNSYLVANICA	3 GAL	419	6' O.C. & STAGGERED
	PROPOSED: SCARLET OAK ALTERNATE: BLACK BIRCH	PROPOSED: QUERCUS COCCINEA ALTERNATE: BETULA LENTA PROPOSED: VACCINIUM	PROPOSED: 12"-14" ALTERNATE: 6-7" HT	73	45' O.C.
	PROPOSED: Highbush Blueberry ALTERNATE: RED OSER DOGWOOD	PROPOSED: CORYMBOSUM ALTERNATE: CORNUS SERICEA	PROPOSED/ALTERNATE: 5-7 GALLON	235	6' O.C. & STAGGERED
	PROPOSED: EASTERN RED CEDAR*** ALTERNATE: CRANBERRY BUSH	PROPOSED: JUNIPERUS VIRGINIANA ALTERNATE: VIBURNUM LENTAGO	PROPOSED: 6"-8" HT ALTERNATE: 3"-4" HT	158	18' O.C.**
	PROPOSED: PITCH PINE ALTERNATE: CRANBERRY BUSH	PROPOSED: PINUS RIGIDA ALTERNATE: VIBURNUM TRILOBUM	PROPOSED: 8"-10" HT ALTERNATE: 2- 3"	150	20' O.C. & STAGGERED
	PROPOSED: SCRUB OAK ALTERNATE: STAGHORN SUMAC	PROPOSED: QUERCUS ILICIFOLIA ALTERNATE: PINUS TYPHINA	PROPOSED: 3"-4" HT ALTERNATE: 4"-5" HT	73	45' O.C.

*NO. DENOTES TOTAL NUMBER OF PROPOSED PLANTINGS FOR ENTIRE SITE PLAN
 **UNLESS OTHERWISE NOTED
 ***IN AREAS WHERE ONLY RED CEDARS ARE PROPOSED, NO ALTERNATES WILL
 BE PERMITTED WITHOUT PRIOR APPROVAL FROM DEVELOPER.

PLANTING PLAN LEGEND

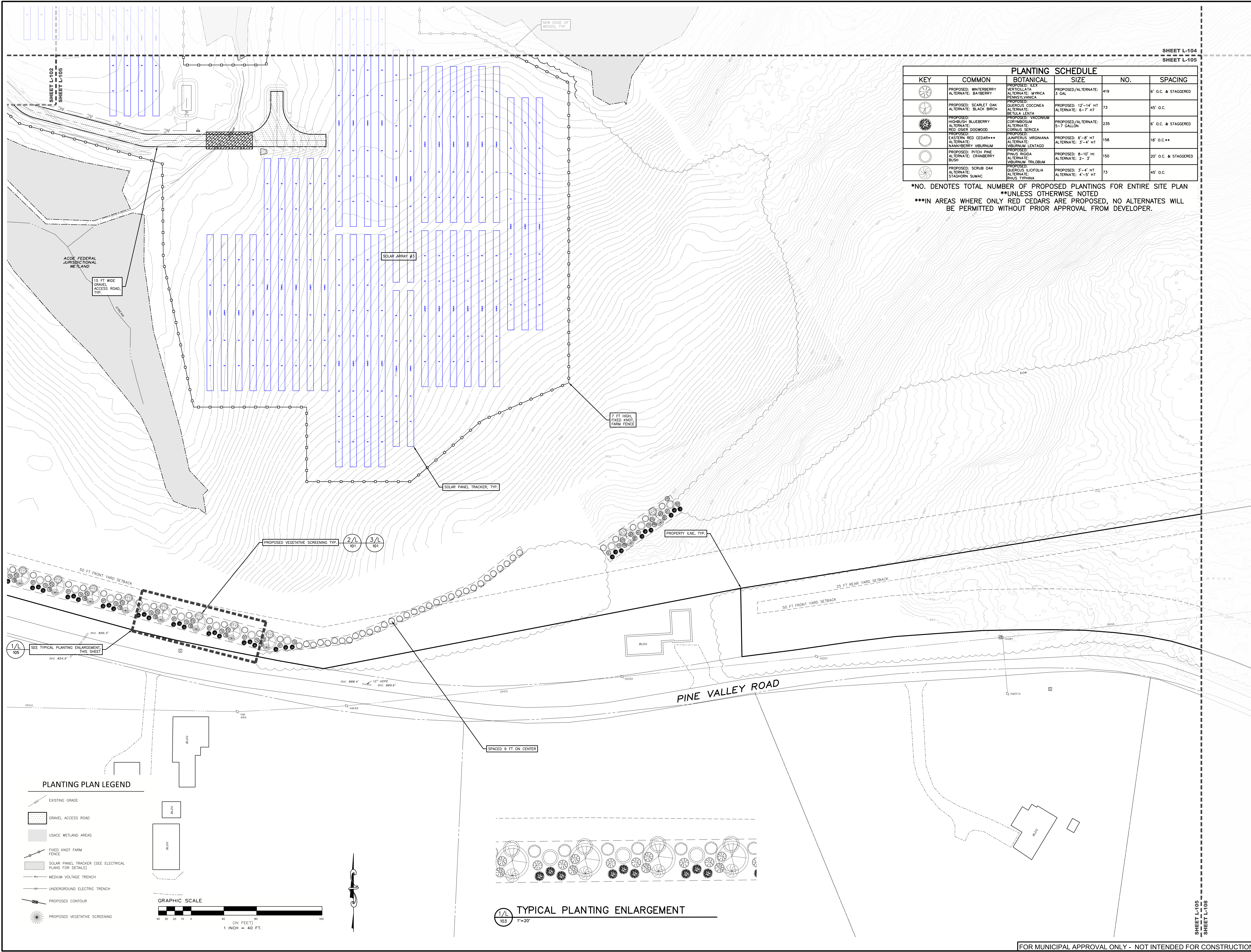
- EXISTING GRADE
- GRAVEL ACCESS ROAD
- USACE WETLAND AREAS
- FIXED KNOT FARM FENCE
- SOLAR PANEL TRACKER (SEE ELECTRICAL PLANS FOR DETAILS)
- MEDIUM VOLTAGE TRENCH
- UNDERGROUND ELECTRIC TRENCH
- PROPOSED CONTOUR

GRAPHIC SCALE
 40 30 20 10 0 (IN FEET)
 1" INCH = 40 FT.

DRAWN BY:	JDM
CHECKED BY:	SKA
DATE:	1/16/23
PROJECT NUMBER:	13661

REVISION	DATE	BY
ISSUED FOR PERMITS	12/12/23	SKA
REVISED PLANNING PLAN FOR COMMENTS	12/12/23	SKA

SCALE:	1" = 40'
NOT FOR CONSTRUCTION	
SHEET TITLE:	PLANTING PLAN
SHEET:	L-105

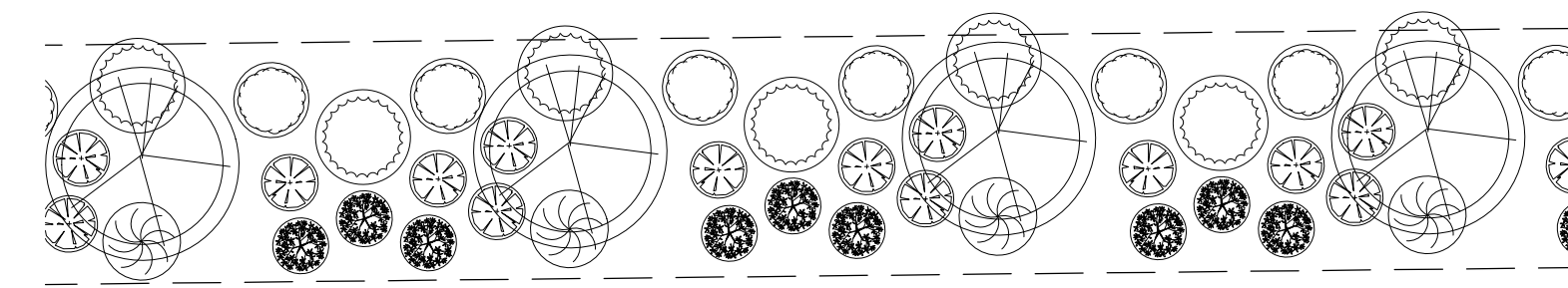
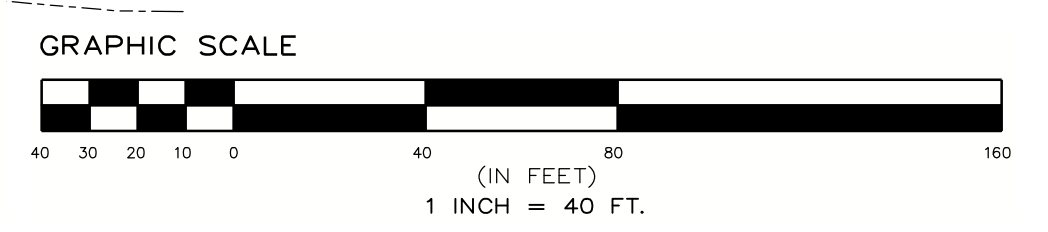


PLANTING SCHEDULE					
KEY	COMMON	BOTANICAL	SIZE	NO.	SPACING
	PROPOSED: WINTERBERRY ALTERNATE: BAYBERRY	PROPOSED: ILEX ALTERNATE: MYRICA PENNYLANICA	PROPOSED/ALTERNATE: 3 GAL	419	6' O.C. & STAGGERED
	PROPOSED: SCARLET OAK ALTERNATE: BLACK BIRCH	PROPOSED: QUERCUS COCCINEA ALTERNATE: BETULA LENTA	PROPOSED: 12"-14" HT ALTERNATE: 6-7" HT	73	45' O.C.
	PROPOSED: HIGHBUSH BLUEBERRY ALTERNATE: RED OSER DOGWOOD	PROPOSED: CORYMBOGOSUM ALTERNATE: CORNUS SERICEA	PROPOSED/ALTERNATE: 5-7 GALLON	235	6' O.C. & STAGGERED
	PROPOSED: EASTERN RED CEDAR*** ALTERNATE: NANNYBERRY VIBURNUM	PROPOSED: JUNPERUS VIRGINIANA ALTERNATE: VIBURNUM LENTAGO	PROPOSED: 6"-8" HT ALTERNATE: 3"-4" HT	158	18' O.C.**
	PROPOSED: PITCH PINE ALTERNATE: CRANBERRY BUSH	PROPOSED: PINUS RIGIDA ALTERNATE: VIBURNUM TRILOBUM	PROPOSED: 8"-10" HT ALTERNATE: 2"-3"	150	20' O.C. & STAGGERED
	PROPOSED: SCRUB OAK ALTERNATE: STAGHORN SUMAC	PROPOSED: QUERCUS LUCIFOLIA ALTERNATE: Rhus TYPHINA	PROPOSED: 3"-4" HT ALTERNATE: 4"-5" HT	73	45' O.C.

*NO. DENOTES TOTAL NUMBER OF PROPOSED PLANTINGS FOR ENTIRE SITE PLAN
 **UNLESS OTHERWISE NOTED
 ***IN AREAS WHERE ONLY RED CEDARS ARE PROPOSED, NO ALTERNATES WILL BE PERMITTED WITHOUT PRIOR APPROVAL FROM DEVELOPER.

PLANTING PLAN LEGEND

- EXISTING GRADE
- GRAVEL ACCESS ROAD
- USACE WETLAND AREAS
- FIXED KNOT FARM FENCE
- SOLAR PANEL TRACKER (SEE ELECTRICAL PLANS FOR DETAILS)
- MEDIUM VOLTAGE TRENCH
- UNDERGROUND ELECTRIC TRENCH
- PROPOSED CONTOUR
- PROPOSED VEGETATIVE SCREENING



TYPICAL PLANTING ENLARGEMENT
 1/2" = 20'

SHEET L-104
 SHEET L-105
 SHEET L-102
 SHEET L-103
 SHEET L-108